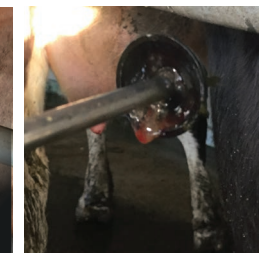
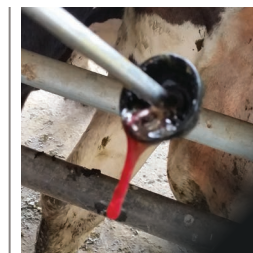
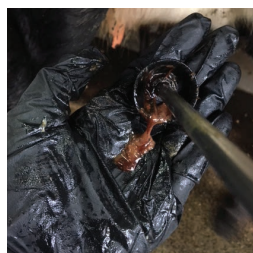
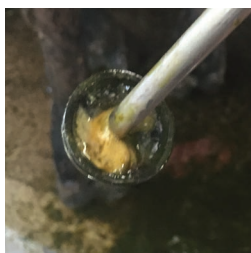
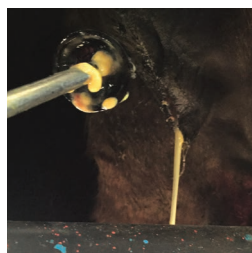
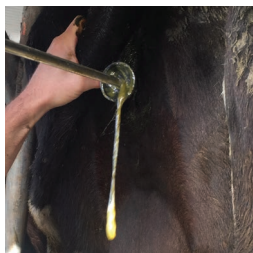


Maximise Metrichchecking

Endometritis is an infection in the uterus following calving. There are often no signs that the cow has endometritis, but it can be detected using the metrichcheck tool to find pus leaking from the uterus.



If the metrichcheck device collects clear mucous or fluid, or no fluid at all, the cow does not require treatment



If the metrichcheck device collects fluid or mucous containing any pus, the cow should be treated with an intra-uterine cephalosporin antibiotic (with nil milk withholding). Examples of dirty cows that should be treated are shown above



If the metrichcheck device collects fluid or mucous that is red or bloody, recheck the cow again in 2-3 weeks

For significantly higher in-calf rates

- Metrichcheck and treat cows in batches at least 8 days post calving
- Metrichcheck first batch 3 weeks after calving starts
- Check in batches every 2-3 weeks thereafter
- Schedule a vet visit to treat each batch of metrichcheck positive cows soon after they are identified

Cows treated early for endometritis have a 10% higher 6 week in-calf rate — delivering an extra \$40 return per treated cow.

An average 400 cow herd with a 20% incidence of endometritis can make an extra \$3,200 just by early metrichchecking and treatment. Every 1% increase in 6 week in-calf is worth \$4.



Evidence based vet medicines

0800 821 421

www.agrihealth.co.nz

AgriHealth