

Co-Synch: New Zealand's superior synchrony program for heifers

Farmers synchronising heifers with the Co-Synch program have tighter calving patterns and superior reproductive performance and profitability.

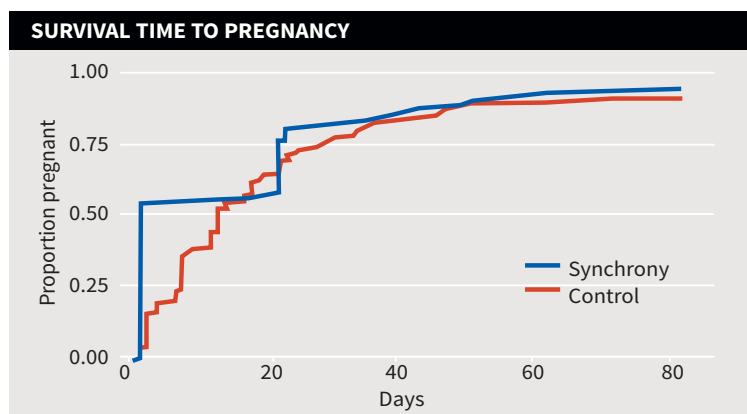
Why synchronise heifers?



Superior performance

A large-scale, NZ 2-year research study confirmed that heifers synchronised with the Co-Synch program in their first mating had fewer empty heifers and earlier conception.

The heifers will be monitored through 2021 calving and mating periods to determine any effect of synchrony on 6 week in-calf rate and other reproductive benefits.



A separate NZ case study demonstrated heifers that were synchronised in their first mating period had a tight calving spread, and better reproductive outcomes during the next mating period as first-lactation cows.

Superior profitability

Heifers synchronised with the superior Co-Synch program will result in an extra \$55 profit based on data from the first year of the study.

Ask your vet for the Co-Synch program



Evidence based vet medicines

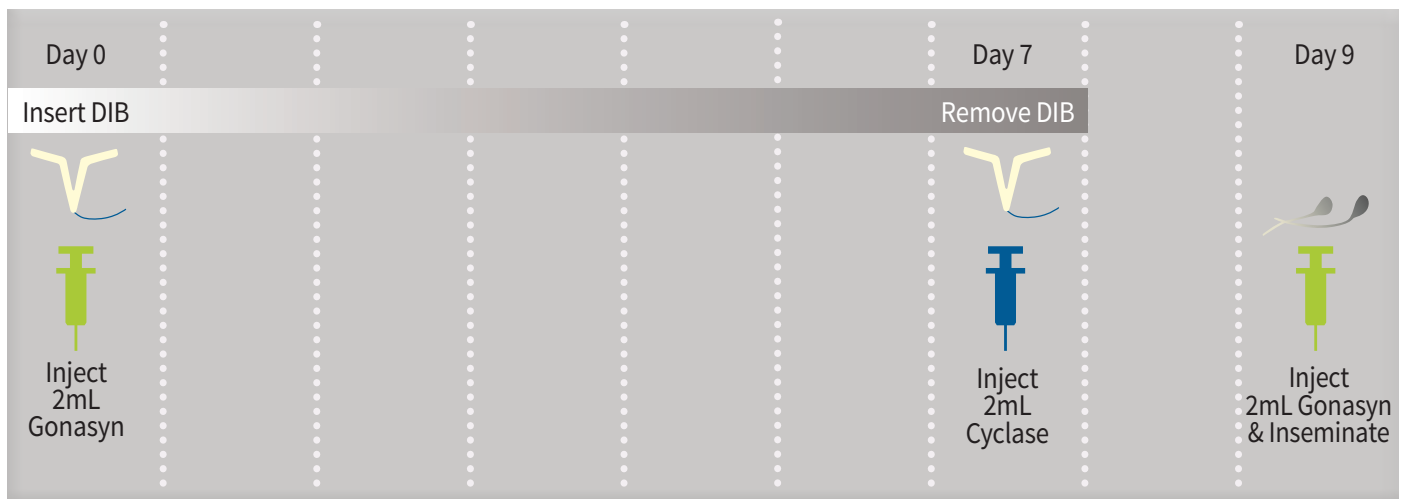
0800 821 421

www.agrihealth.co.nz

AgriHealth

Superior Co-Synch 2021

DIB Co-Synch program timer



"Having heifers on the Co-Synch Program, means I know when they are going to calve so I can plan and manage accordingly. That is the main benefit to me."

Arjen Schouten

Farm owner, Canterbury



"It is simple to use the Heifer Co-Synch Program. The benefits of extra days in milk and longer time between calving and mating is excellent."

William Gard

Claxby Farms, Canterbury

